



AimLite

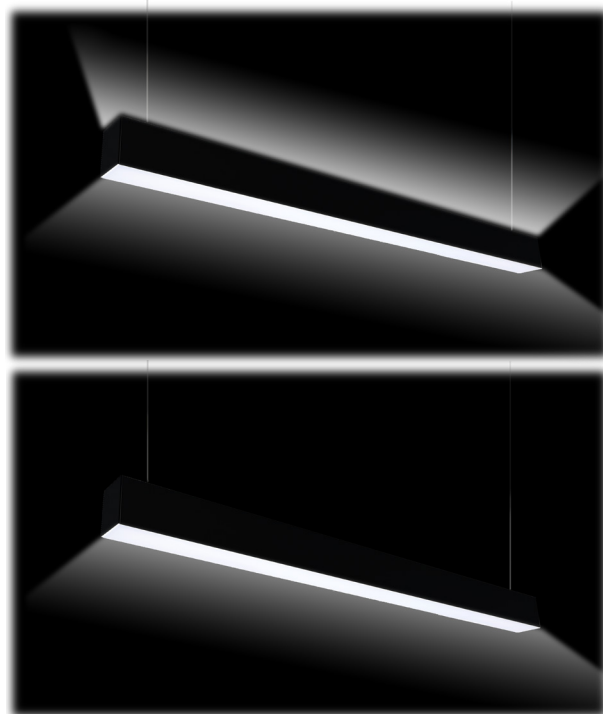
# AUSO QUICKSHIP AUS-L GEN2

CCT SELECTABLE LINEAR  
ARCHITECTURAL LUMINAIRE



## FEATURES

- All in one solution with integrated color temperature selection ( 3 000 K/3 500 K/4 000K )
- Direct and Direct/Indirect lighting versions available
- Available in a black or white matte finish
- Can be joined for continuous row mounting up to 20 units of 40 W and 10 units of 80 W
- 10' aviation cable, power cord and canopy included
- It provides an excellent lumen efficacy and is offered in 4' and 8' lengths



QUICKSHIP



LED



DAMP  
LOCATION



ICES  
005



DIRECT  
LIGHT



DIRECT/INDIRECT  
LIGHT



3CCT  
SELECTABLE

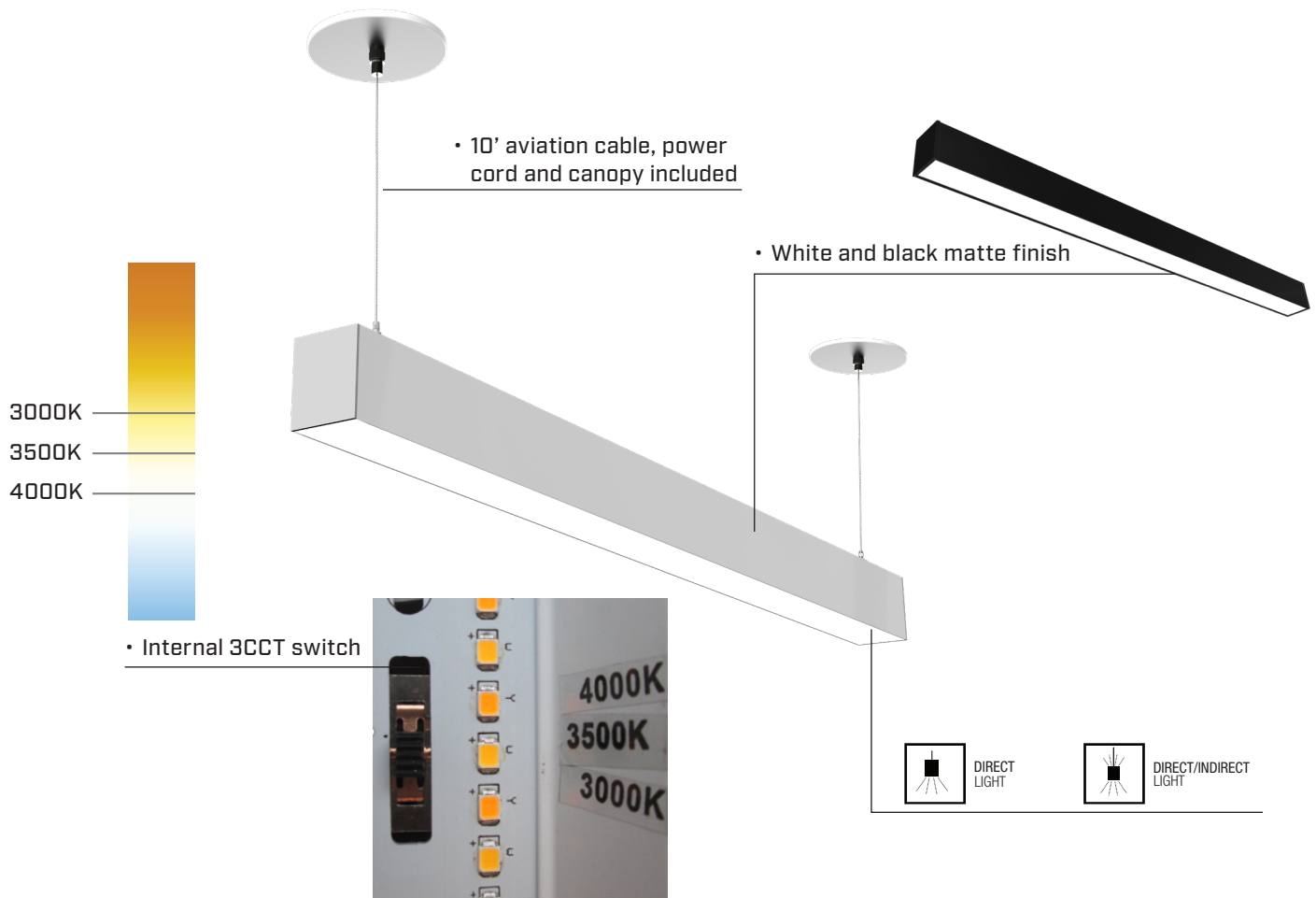
AimLite

AUS-L GEN2

T 514 227-1288

TF 1866 348-2374

aimlite.com



## CONTINUOUS RUN

FIELD INSTALLED ROW MOUNTING ACCESSORY TO CUSTOMIZE ANY PROJECT



SEAMLESS CONTINUOUS MOUNT INSTALLATION, NO LIGHT GAP BETWEEN THE LUMINAIRES

