

RMMD COMPACT REMOTE

MR16 SURFACE MOUNT
 SINGLE, DOUBLE OR TRIPLE
 6 V, 12 V, & 24 V LAMPS



The RMMD series of commercial MR16 remotes provides exceptional light output in a compact, traditional design. The die cast, all metal housing is fully adjustable with a friction lock tilt and swivel that can be locked in place with a rear mounted set screw. The canopy is designed to mount directly to typical electrical junction boxes. Available in 6 V, 12 V and 24 V models, all utilizing low glare, MR16 quartz halogen or LED lamps.

FEATURES & SPECIFICATIONS





MECHANICAL

- Die cast, solid metal housing with die cast, twist lock lamp collar
- Complete adjustability - both tilt and swivel
- 5" diameter canopy standard
- Two canopy mounting holes designed to match standard electrical junction boxes
- White paint finish is standard, black color is optional

- MR16 lamp designed with low glare reflector and available in 6 VDC, 12 VDC or 24 VDC

APPROVALS

- CSA Certified to C22.2 #141-15
- Meets requirements of ICES-005

OVERVIEW			
LIGHT SOURCE		LED, INCANDESCENT	INPUT VOLTAGE (VDC)
			6, 12, 24
 NUCLEUS COMPATIBLE	 QUICKSHIP	 ICES 005	

For complete warranty details, please see our terms and conditions on our website.

Data is based upon tests performed in a controlled environment. Actual performance can vary depending on operating conditions.
 All products are subject to change or may be discontinued any time without notice.

TYPICAL SPECIFICATION



TYPICAL SPECIFICATION

The all Die Cast remote heads shall be, solid metal housing with, twist lock lamp collar, fully adjustable for maximum spacing and designed to accept Aimlite's factory installed high performance MR16 LED lamps () V, () W, () lumens. The LED's, lens and circuit boards shall be designed for the intent of Emergency Lighting to ensure extended life and maximum performance. Remote fixture shall be supplied with a canopy for installation on any four-inch octagon box. The remote fixtures shall be certified to CSA 22.2 No.141-15 and be ICES005 compliant. The remote unit shall be Aimlite model: RMMD

QUICK SHIP ORDERING GUIDE



PART NO	DC VOLTS [VDC]	NBR OF HEADS	HEAD	LAMP [W]	LIGHT SOURCE	COLOR
RMMD1-06-24V4WLR/WH	6-24	1	RMMD	4	LED	WHITE
RMMD2-06-24V4WLR/WH	6-24	2	RMMD	4	LED	WHITE

QUICK SHIP: Product availability is subject to change without notice. Please contact your AimLite customer service representative to confirm inventory levels at time of order.

ORDERING GUIDE - LED

RMMD		-				/	
------	--	---	--	--	--	---	--

SERIES	NBR OF HEADS	VOLTS [VDC OPERATIONAL]	WATTS [W]	LAMP TYPE	COLOR	OPTIONS
RMMD	1 - SINGLE HEAD	06-24V - 6 TO 24	4W - 4 WATTS	LR - LED	WHT - WHITE (STANDARD) BLK - BLACK	LCP - LESS CANOPY' VDR - TAMPER PROOF SCREWS WGD - WIREGUARD (ORDER SEPARATELY) PGD - LEXAN GUARD
	2 - DOUBLE HEAD		5W - 5 WATTS	LA - LED		
	3 - TRIPLE HEAD	12-24V - 12 TO 24	6W - 6 WATTS	LA - LED		
	4 - QUAD HEAD (REQUIRE 12" DIA. CANOPY)		7W - 7 WATTS			
	1 - SINGLE HEAD	NUC - NUCLEUS DRIVER	5W - 5 WATTS	LA - LED		
	2 - DOUBLE HEAD	NUC - NUCLEUS DRIVER	2.5 - 2.5 WATTS 5W - 5 WATTS			

¹ LCP option only available with Single head

ORDERING GUIDE - INCANDESCENT

RMMD		-			/	
------	--	---	--	--	---	--

SERIES	NBR OF HEADS	VOLTS [VDC]	LAMP	COLOR	OPTIONS
RMMD	1 - SINGLE HEAD	06V - 6	SEE LAMP SELECTION CHART BELOW	WHT - WHITE (STANDARD) BLK - BLACK	LCP - LESS CANOPY ¹ VDR - TAMPER PROOF SCREWS WGD - WIREGUARD (ORDER SEPARATELY) PGD - LEXAN GUARD
	2 - DOUBLE HEAD	12V - 12			
	3 - TRIPLE HEAD	24V - 24			
	4 - QUAD HEAD (REQUIRE 12" DIA. CANOPY)				

¹ LCP option only available with Single head

LAMP SELECTION - INCANDESCENT

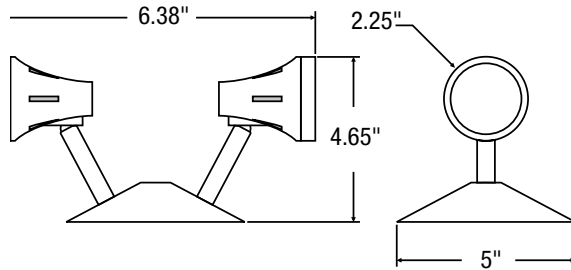
MR16 • SMALL HEAD	6 V	12 V	24 V
QUARTZ HALOGEN	10WQ	20WQ, 35WQ	20WQ, 50WQ

WIREGUARD¹

	PART NUMBER	DIMENSIONS (IN)
1 HEAD	WGD550-V2	11 X 8.75 X 6.75
2 HEADS	WGD550-V2	11 X 8.75 X 6.75

¹ Please contact AimLite customer service representative for more information

DIMENSIONS



LEXAN GUARD

	PART NUMBER	DIMENSIONS (IN)
1 HEAD	PGD103	7 X 7.25 X 8.5
2 HEADS	PGD104	14 X 7.25 X 7.5

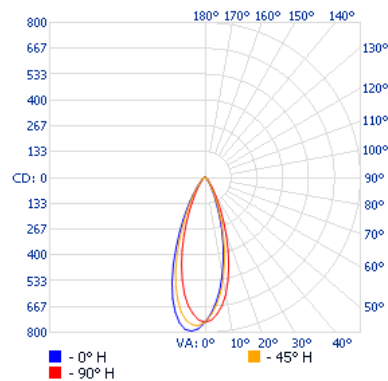
LUMEN TABLE

WATTS	LUMENS
4W LR	388
5W LA	435
6W LA	507
7W LA	652

PHOTOMETRIC DATA¹

MR16-06-24V4WLR • 228.7 LM

POLAR CANDELA DISTRIBUTION



ZONAL LUMEN SUMMARY

ZONE	LUMENS	% FIXTURE
0-30	164.4	71.9%
0-40	182.0	79.6%
0-60	214.8	93.9%
60-90	13.9	6.1%
70-100	4.1	1.8%
90-120	0	0%
0-90	228.7	100%
90-180	0	0%
0-180	228.7	100%

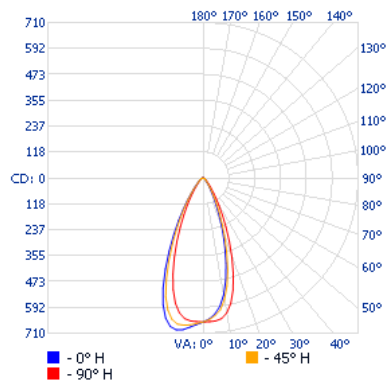
ILLUMINANCE AT A DISTANCE

CENTER BEAM FC	BEAM WIDTH
1.7'	168
3.3'	44.5
5.0'	19.4
6.7'	10.8
8.3'	7.04
10.0'	4.85

■ Beam. Spread: 35.4°

MR16-06-24V5WLA • 440.7 LM

POLAR CANDELA DISTRIBUTION



ZONAL LUMEN SUMMARY

ZONE	LUMENS	% FIXTURE
0-30	352.6	80%
0-40	391.8	88.9%
0-60	427.2	96.9%
60-90	13.5	3.1%
70-100	4.3	1%
90-120	0	0%
0-90	440.7	100%
90-180	0	0%
0-180	440.7	100%

ILLUMINANCE AT A DISTANCE

CENTER BEAM FC	BEAM WIDTH
1.7'	407
3.3'	108
5.0'	47.0
6.7'	26.2
8.3'	17.1
10.0'	11.8

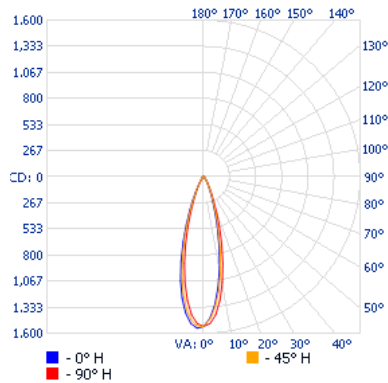
■ Vert. Spread: 29.3° ■ Hor. Spread: 31.7°

¹ Complete IES files available on our website.

PHOTOMETRIC DATA¹

MR16-12-24V6WLA • 508.7 LM

POLAR CANDELA DISTRIBUTION



ZONAL LUMEN SUMMARY

ZONE	LUMENS	% FIXTURE
0-30	407.0	80%
0-40	452.3	88.9%
0-60	493.1	96.9%
60-90	15.6	3.1%
70-100	4.9	1%
90-120	0	0%
0-90	508.7	100%
90-180	0	0%
0-180	508.7	100%

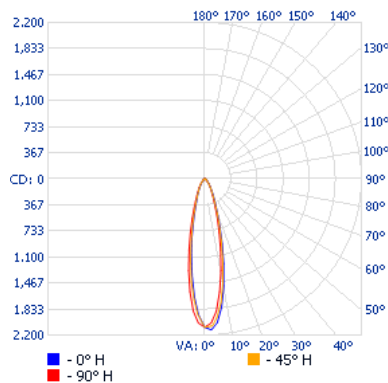
ILLUMINANCE AT A DISTANCE

CENTER BEAM FC		BEAM WIDTH	
1.7'	470	0.9'	1.0'
3.3'	125	1.7'	1.9'
5.0	54.3	2.6'	2.8'
6.7	30.2	3.5'	3.8'
8.3	19.7	4.3'	4.7'
10.0	13.6	5.2'	5.7'

■ Vert. Spread: 29.3° ■ Hor. Spread: 31.7°

MR16-06-24V7WLA • 635.2 LM

POLAR CANDELA DISTRIBUTION



ZONAL LUMEN SUMMARY

ZONE	LUMENS	% FIXTURE
0-30	508.2	80%
0-40	564.7	88.9%
0-60	615.7	96.9%
60-90	19.5	3.1%
70-100	6.1	1%
90-120	0	0%
0-90	635.2	100%
90-180	0	0%
0-180	635.2	100%

ILLUMINANCE AT A DISTANCE

CENTER BEAM FC		BEAM WIDTH	
1.7'	587	0.9'	1.0'
3.3'	156	1.7'	1.9'
5.0	67.8	2.6'	2.8'
6.7	37.8	3.5'	3.8'
8.3	24.6	4.3'	4.7'
10.0	16.9	5.2'	5.7'

■ Vert. Spread: 29.3° ■ Hor. Spread: 31.7°

¹ Complete IES files available on our website.