

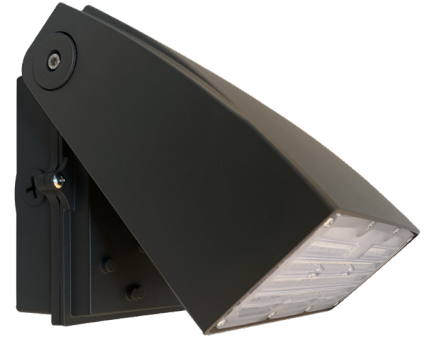
W20T

LED ADJUSTABLE WALL PACK

3 CCT AND 2 POWER SELECTABLE

INTEGRATED PHOTOCELL

The W20T adjustable wall pack series is built with a modern design which includes a 0° to 90° field adjustable angle dial allowing for a flexible installation to suit any outdoor perimeter, building entrances or walkways application. This luminaire has an integrated photocell and features the latest in LED technology such as allowing the user to control the color temperature and power by using the internal field adjustable integrated switches.



FEATURES & SPECIFICATIONS

CONSTRUCTION

Housing

- This luminaire is made out of aluminum die cast and comes in a bronze powder coat finish
- The housing has 4 conduit entries of 1/2" on each side

- Each model has an integrated button type photocell that can be easily turned off
- 0° to 90° field adjustable angle dial

Lens

Each luminaire is outfitted with a clear polycarbonate lens

ELECTRICAL

- Color temperature 3 000/4 000/5 000 K, default setting 4 000 K
- Multi Volt: 120-347 V
- Ambient temperature: -40 °C to 50 °C
- Estimated lifespan of 50 000 hours to L70
- 0-10 V dimming
- 6 kV surge protection

COMPLIANCES

- Wet location
- IP65
- IK07
- Meets requirements of ICES-005 5 for class B products
- cULus

OVERVIEW			
LIGHT SOURCE	LED	EFFICIENCY (LM/W)	121 - 140
WATTS (W)	15/30 50/80	COLOR TEMPERATURE (K)	3 000/4 000/5 000
		CRI	70+
LUMEN OUTPUT (LM)	1 950 - 10 429	WEIGHT (LBS)	2.99 - 4.85

Data is based upon tests performed in a controlled environment. Actual performance can vary depending on operating conditions.
All products are subject to change or may be discontinued any time without notice.

QUICK SHIP ORDERING GUIDE



PART NUMBER	DLC UNIQUE ID	WATTS [W]	VOLTS [V]	COLOR TEMP. [K]	LUMEN OUTPUT [LM] ¹	EFFI- CIENCY [LM/W]	CRI	LIFE L70 [HRS]	BEAM ANGLE [°]	FINISH	DIM- MING	PF	THD [%]	TRADITIONAL EQUIVALENT (W)		CASE QTY (MAS- TER)
														MH	HPS	
														CCT AND POWER SELECTABLE WITH INTEGRATED PHOTOCELL ²		
W20T-PS30A-323C8RP	PG3AR9MP	15/30	120-347	3000/4000/5000	2 100-3 925	137-140	70+	50 000	90X110	BRONZE	YES	≥0.90	≤20	70-150	70-100	8
W20T-PS80A-323C8RP	PLLQSPK	50/80	120-347	3000/4000/5000	7 000-10 392	139-140	70+	50 000	90X110	BRONZE	YES	≥0.90	≤20	175-400	150-250	4

QUICK SHIP: Product availability is subject to change without notice. Please contact your AimLite customer service representative to confirm inventory levels at time of order.

¹Lumen values are based on 4 000 K default settings. Please refer to Quick Ship Technical Specification Table for more details on other color temperatures.

²Integrated ON/OFF photocell that can be easily disabled.

ORDERING GUIDE

W20T	—		—	32	—	3C	—		—		/	
------	---	--	---	----	---	----	---	--	---	--	---	--

SERIES	LUMEN PACKAGE [W]	VOLTS [V]	COLOR TEMP. [K]	CASTING COLOR	MANDATORY OPTIONS	OPTIONS
W20T	PS30A - 15/30 PS80A - 50/80	32 - 120-347	3C - 3 000/4 000/5 000	BR - BRONZE SP - SPECIAL COLOR	P - BUTTON TYPE PHOTOCELL	KV - 10 KV OSI ¹ - WHITE OCCUPANCY SENSOR

¹The occupancy sensor is external.

QUICK SHIP TECHNICAL SPECIFICATION TABLE

PART NUMBER	WATTS [W]	3 000 K			4 000 K			5 000 K		
		LUMEN OUTPUT [LM]	EFFICIENCY [LM/W]	LED CURRENT [MA]	LUMEN OUTPUT [LM]	EFFICIENCY [LM/W]	LED CURRENT [MA]	LUMEN OUTPUT [LM]	EFFICIENCY [LM/W]	LED CURRENT [MA]
W20T-PS30A-323C8RP	15	1 950	130	0.14	2 100	140	0.14	2 025	135	0.14
	30	3 616	121	0.28	3 925	137	0.28	3 919	131	0.28
W20T-PS80A-323C8RP	50	6 500	130	0.46	7 000	140	0.46	6 750	135	0.46
	80	9 625	129	0.75	10 392	139	0.75	10 429	134	0.75

COMPATIBLE DIMMERS

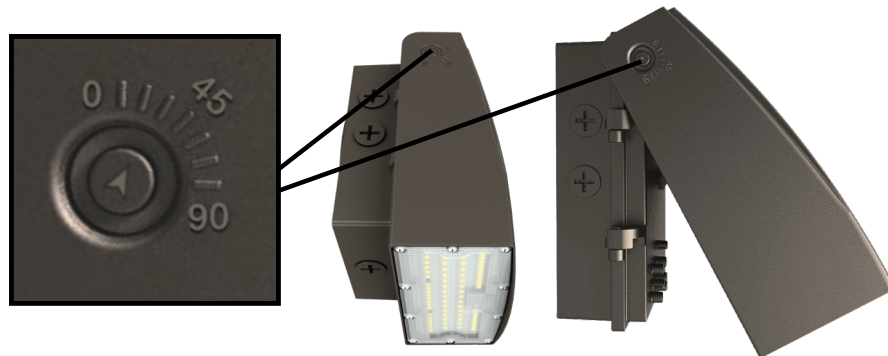
BRAND	MODEL NUMBER
LEVITON	DS710
LEVITON	IP710
LUTRON	NTSTV-DV
LUTRON	NFTV
LUTRON	DVTV-WH
HARMONY	H4FBL3PW

Dimming range: 10%-100%

NOTE: The above table shows dimmers that have been tested and have demonstrated proper operation under normal conditions. Each installation being unique, various factors such as load, common neutrals or other electrical products on the circuit can, in certain instances, cause variance in system performance. Read and comply to the dimmer installation instructions. Consult dimming system manufacturer for additional support in operation. Aimlite recommends to use dimmers designed to work with LED products. Older dimmers designed for incandescent products may cause erratic operation. Some dimmers may require more than one product for stable operation. The maximum number of products is determined by the dimmer wattage rating with LEDs. Be careful, these dimmers have different ratings depending on the product type. Again, refer to the dimmer installation instructions.

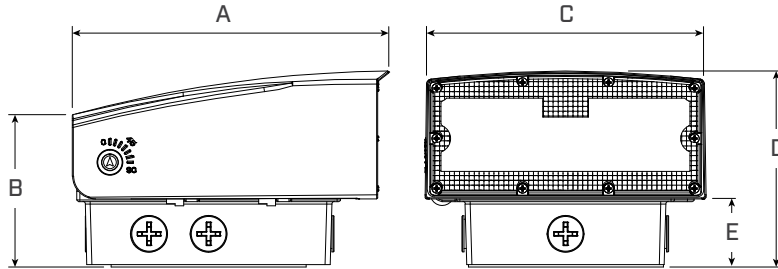
ADJUSTABLE ANGLE DIAL

0° TO 90° FIELD ADJUSTABLE ANGLE DIAL

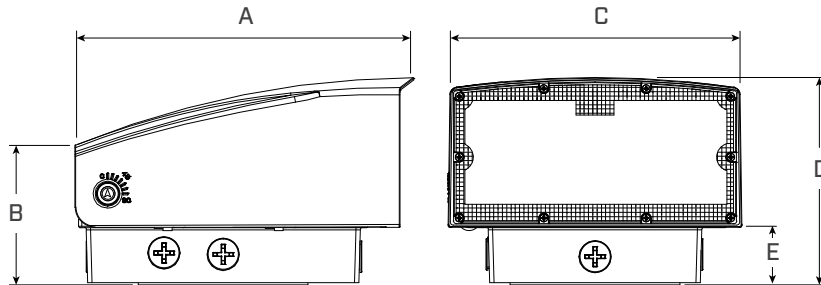


DIMENSIONS

W20T-PS30A-323CBRP



W20T-PS80A-323CBRP

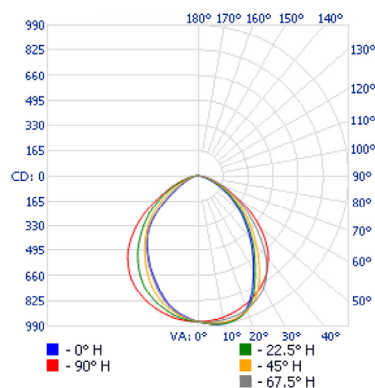


	W20T-PS30A-323CBRP	W20T-PS80A-323CBRP
A in. [cm]	7.36 [18.7]	9.17 [23.3]
B in. [cm]	3.62 [9.2]	3.78 [9.6]
C in. [cm]	6.42 [16.3]	7.68 [19.5]
D in. [cm]	4.21 [10.7]	5.16 [13.1]
E in. [cm]	1.54 [3.9]	1.54 [3.9]

PHOTOMETRIC DATA¹

W20T-PS30A-323CBRP • 15 W • 4 000 K • 2 099 LM

POLAR CANDELA DISTRIBUTION



ZONAL LUMEN SUMMARY

ZONE	LUMENS	% FIXTURE
0-30	729.5	34.8%
0-40	1 152.1	54.9%
0-60	1 835.1	87.4%
60-90	258.1	12.3%
70-100	87.4	4.2%
90-120	1.2	0.1%
0-90	2 093.3	99.7%
90-180	5.7	0.3%
0-180	2 099.0	100%

ILLUMINANCE AT A DISTANCE

CENTER BEAM FC		BEAM WIDTH	
8.3'	13.9	14.9'	20'
16.7'	3.44	29.9'	40.3'
25'	1.54	44.8'	60.4'
33.3'	0.87	59.6'	80.4'
41.7'	0.55	74.7'	100.7'
50'	0.38	89.5'	120.8'

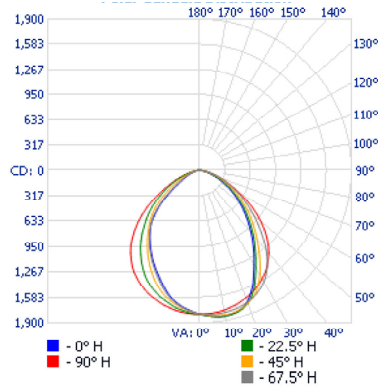
■ Vert. Spread: 83.7° ■ Hor. Spread: 100.7°

¹ Complete IES files available on our website.

PHOTOMETRIC DATA¹

W20T-PS30A-323CBRP • 30 W • 4 000 K • 3 923 LM

POLAR CANDELA DISTRIBUTION



ZONAL LUMEN SUMMARY

ZONE	LUMENS	% FIXTURE
0-30	1 363.4	34.8%
0-40	2 153.3	54.9%
0-60	3 430.0	87.4%
60-90	482.4	12.3%
70-100	163.3	4.2%
90-120	2.3	0.1%
0-90	3 912.4	99.7%
90-180	10.7	0.3%
0-180	3 923.1	100%

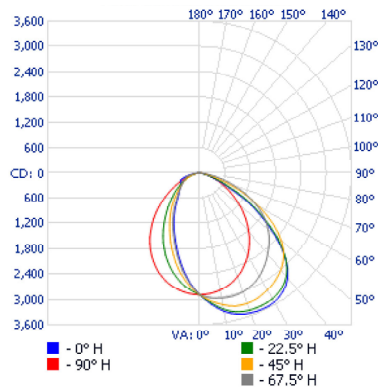
ILLUMINANCE AT A DISTANCE

CENTER BEAM FC			BEAM WIDTH	
8.3'	26		14.9'	20'
16.7'	6.43		29.9'	40.3'
25'	2.87		44.8'	60.4'
33.3'	1.62		59.6'	80.4'
41.7'	1.03		74.7'	100.7'
50'	0.72		89.5'	120.8'

■ Vert. Spread: 83.7° ■ Hor. Spread: 100.7°

W20T-PS80A-323CBRP • 50 W • 4 000 K • 6 997 LM

POLAR CANDELA DISTRIBUTION



ZONAL LUMEN SUMMARY

ZONE	LUMENS	% FIXTURE
0-30	2 181.9	31.2%
0-40	3 524.6	50.4%
0-60	5 938.3	84.9%
60-90	1 024.1	14.6%
70-100	365.4	5.2%
90-120	14.5	0.2%
0-90	6 962.4	99.5%
90-180	35.1	0.5%
0-180	6 997.4	100%

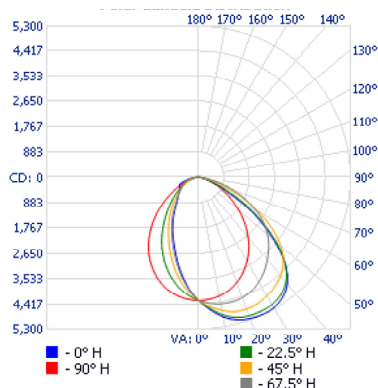
ILLUMINANCE AT A DISTANCE

CENTER BEAM FC			BEAM WIDTH	
8.3'	42		12.3'	20'
16.7'	10.4		24.8'	40.3'
25'	4.63		37.1'	60.3'
33.3'	2.61		49.4'	80.3'
41.7'	1.66		61.8'	100.5'
50'	1.16		74.2'	120.5'

■ Vert. Spread: 73.1° ■ Hor. Spread: 100.6°

W20T-PS80A-323CBRP • 80 W • 4 000 K • 10 388 LM

POLAR CANDELA DISTRIBUTION



ZONAL LUMEN SUMMARY

ZONE	LUMENS	% FIXTURE
0-30	3 239.1	31.2%
0-40	5 232.5	50.4%
0-60	8 815.8	84.9%
60-90	1 520.3	14.6%
70-100	542.4	5.2%
90-120	21.5	0.2%
0-90	10 336.1	99.5%
90-180	52.0	0.5%
0-180	10 388.2	100%

ILLUMINANCE AT A DISTANCE

CENTER BEAM FC			BEAM WIDTH	
8.3'	62.3		12.3'	20'
16.7'	15.4		24.8'	40.3'
25'	6.87		37.1'	60.3'
33.3'	2.87		49.4'	80.3'
41.7'	2.47		61.8'	100.5'
50'	1.72		74.2'	120.5'

■ Vert. Spread: 73.1° ■ Hor. Spread: 100.6°

¹ Complete IES files available on our website.